



## **CITY OF MARSHALL**

### **COMMISSION AGENDA INFORMATION SHEET:**

**MEETING DATE:** May 26, 2016

**PROJECT:** Consider and act on a request to approve Change Order #1 to a contract with Lone Star Equipment, related to the 2016 Street Improvement Program, to amend and add streets to our 2016 Street Improvement Program. (Public Services Director)

**DESCRIPTION:** Attached is Change Order #1 for the 2016 Street Improvement Program that addresses needed changes. One change extends our milling operations to several streets missed in the base bid. The second change involves adding geotechnical fabric below the asphalt overlay on Travis Street between South Washington and Starr Circle. The fabric helps stop the joints in the concrete portion of Travis Street from reflecting through the asphalt. We added fabric below the asphalt on Grove Street three years ago and it has greatly reduced the crack reflection due to the concrete joints. Lastly, we need to fully address Poplar Street from Highway 59, eastward to the Marshall Arena entrance and the north end of Fern Lake Cut-Off because recent traffic increases have caused the surface and base to deteriorate at a much faster pace than normal, because travelers and locals residents are using Fern Lake Cut-Off and Poplar Street to avoid the construction project on Highway 59 North.

In order to cover the increased costs, we plan to delay two projects until 2017, being renovation of the huge dip at Indian Springs and Travis Street (near the school), and the big dip on Memorial Drive as you head eastward from Warren Drive. Delaying these two projects will allow us to address the base failures on Poplar Street and reconstruct the worst sections and address the base failures on the north end of Fern Lake Cut-Off near the Loop. All total, change order #1 includes a net increase of \$44,767.00 and will increase the contract cost with Lone Star Equipment to new total of \$1,539,551.10.

Funds are available from the existing General Fund, Street Sales Tax Funds, and Reserve Funds for Street Damages.

**COST:**  
\$44,767.00

<b>FUNDING:</b>	<u>Acct. Name &amp; No</u>	<u>Original Budget</u>
	01-0408-05-02	\$1,035,270.00
	80-0408-00-00	\$ 517,500.00
	Gen Fund Carry Over	\$ 80,000.00
	Street Tax Carry Over	\$ 25,000.00
	Street Damage Fund	<u>\$ 36,507.00</u>
		\$1,694,277.00

**RECOMMENDED**

**ACTION:**

Approve a staff request to approve Change Order #1 to a contract with Lone Star Equipment, related to the 2016 Street Improvement Program, to amend and add streets to our 2016 Street Improvement Program. (Public Services Director)

**CITY CONTACT:** J. C. Hughes, Public Services Director 903-503-4503

**ATTACHMENTS:**

- Change Order #1
- Change Order #1 Drawing Additions

cc: Lisa Agnor, City Manager  
File

HAYES ENGINEERING, INC.  
 Texas Registered Engineering Firm F-1465  
 2126 Alpine St., Longview, TX 75601  
 (903) 758-2010

TO: LONE STAR EQUIPMENT COMPANY  
 P.O. Box 790  
 Henderson, TX 75653

CHANGE ORDER NO.: 1  
 DATE: 4/22/2016  
 PROJECT NO.: MA-15-03  
 LOCATION: City of Marshall  
 JOB DESCRIPTION: 2016 Street Imp Program  
 Base + Add Alts 1 thru 6

ORIGINAL CONTRACT PRICE: \$ 1,494,784.10

You are hereby requested to comply with the following changes from the contract plans and specifications:

ITEM	DESCRIPTION OF CHANGE	QTY	UM	COST	DECREASE IN CONTRACT PRICE	INCREASE IN CONTRACT PRICE
<b>2016 OVERLAYS - NEW PROGRAM</b>						
<i>EMORY ST - from Resborough Springs westward to Sanford</i>						
7.	MILL EDGE AT CURB & GUTTER & BUTT JOINTS & REMOVE EXISTING PAVEMENT	1074	LF	\$3.00		\$ 3,222.00
<b>INDIAN SPRINGS (DIP) - renovate intersection</b>						
1.	F&I, MAINTAIN & REMOVE BARRICADES, SIGNS & TRAFFIC CONTROL	-1	LS	\$500.00	(500.00)	
2.	MILL EDGE AT CURB & GUTTER & BUTT JOINTS & REMOVE EXISTING PAVEMENT	-352	LF	\$3.00	(1,056.00)	
3.	F&I STD 1 1/2" THK (MIN.) H/MAC TYPE "D" OVERLAY COURSE INCL ASPH TACK	-790	SY	\$9.25	(7,307.50)	
4.	FURNISH & INSTALL TYPE "D" LEVEL UP	-111	TONS	\$125.00	(13,875.00)	
5.	REMOVE & DISPOSE OF EXISTING CURB & GUTTER	-36	LF	\$10.00	(360.00)	
6.	REMOVE & DISPOSE OF EXISTING 5' CURB INLET	-1	EA	\$200.00	(200.00)	
7.	FURNISH & INSTALL STANDARD CURB & GUTTER	-36	LF	\$20.00	(720.00)	
8.	CONSTRUCT 5' CONCRETE CURB INLET	-1	EA	\$700.00	(700.00)	
<b>MERRITT ST - from South Washington Ave. westward to Bomar</b>						
7.	MILL EDGE AT CURB & GUTTER & BUTT JOINTS & REMOVE EXISTING PAVEMENT	1900	LF	\$3.00		\$ 5,700.00
<b>MOORE ST - from Wiley Ave. northward to Carter St</b>						
4.	MILL EDGE AT CURB & GUTTER & BUTT JOINTS & REMOVE EXISTING PAVEMENT	1090	LF	\$3.00		\$ 3,270.00
<b>WELLINGTON ST: SOUTH - from Square southward to Travis</b>						
6.	MILL EDGE AT CURB & GUTTER & BUTT JOINTS & REMOVE EXISTING PAVEMENT	2160	LF	\$3.00		\$ 6,480.00
<b>WILEY AVE - from University Ave northward to James Farmer</b>						
5.	MILL EDGE AT CURB & GUTTER & BUTT JOINTS & REMOVE EXISTING PAVEMENT	1733	LF	\$3.00		\$ 5,199.00
<b>ADD.AL.T. #2: POPLAR ST. EAST - 1,110' east of Hwy. 59 to 800' east</b>						
1.	F&I, MAINTAIN & REMOVE BARRICADES, SIGNS & TRAFFIC CONTROL	-1	LS	\$1,000.00	(1,000.00)	
2.	F&I STD 1 1/2" THK (MIN.) H/MAC TYPE "D" OVERLAY COURSE INCL ASPH TACK	-2220	SY	\$9.50	(21,090.00)	
3.	F&I STD 1 1/2" THK (MIN.) H/MAC TYPE "D" OVERLAY COURSE INCL ASPH TACK	-21	SY	\$23.00	(483.00)	
4.	SAWCUT EXISTING ASPHALT PAVEMENT	-114	LF	\$1.00	(114.00)	
5.	VALVE BOX ADJUSTMENT TO GRADE	-1	EA	\$200.00	(200.00)	
6.	FURNISH & INSTALL STANDARD 8" PATCH	-315	SY	\$70.00	(22,050.00)	
<b>ADD.AL.T. #3: POPLAR ST. EAST - from Baffo Rd. to 600' east</b>						
1.	F&I, MAINTAIN & REMOVE BARRICADES, SIGNS & TRAFFIC CONTROL	-1	LS	\$1,000.00	(1,000.00)	
2.	F&I STD 1 1/2" THK (MIN.) H/MAC TYPE "D" OVERLAY COURSE INCL ASPH TACK	-1605	SY	\$9.50	(15,247.50)	
3.	F&I STD 1 1/2" THK (MIN.) H/MAC TYPE "D" DRIVEWAY TRANSITION	-21	SY	\$23.00	(483.00)	
4.	SAWCUT EXISTING ASPHALT PAVEMENT	-44	LF	\$1.00	(44.00)	
5.	FURNISH & INSTALL STANDARD 8" PATCH	-1605	SY	\$70.00	(112,350.00)	
<b>ADD.AL.T. #4: POPLAR ST. E. - from 1/2 way bet Myrtlewood &amp; MHP to 400' east</b>						
1.	F&I, MAINTAIN & REMOVE BARRICADES, SIGNS & TRAFFIC CONTROL	-1	LS	\$500.00	(500.00)	
2.	F&I STD 1 1/2" THK (MIN.) H/MAC TYPE "D" OVERLAY COURSE INCL ASPH TACK	-890	SY	\$9.20	(8,198.00)	
3.	F&I STD 1 1/2" THK (MIN.) H/MAC TYPE "D" DRIVEWAY TRANSITION	-18	SY	\$23.00	(414.00)	
4.	SAWCUT EXISTING ASPHALT PAVEMENT	-42	LF	\$1.00	(42.00)	
5.	FURNISH & INSTALL STANDARD 8" PATCH	-890	SY	\$70.00	(62,300.00)	

**ADD'L T. #5: WARD ST - from Center 400' to Hwy 80 & West Houston to 300' north**

1. F&I, MAINTAIN & REMOVE BARRICADES, SIGNS & TRAFFIC CONTROL
2. F&I STD 1 1/2" THK (MIN.) HMAC TYPE "D" OVERLAY COURSE INCL ASPH TACK
3. F&I STD 1 1/2" THK (MIN.) HMAC TYPE "D" DRIVEWAY TRANSITION
4. SAWCUT EXISTING ASPHALT PAVEMENT
5. VALVE BOX ADJUSTMENT TO GRADE
6. FURNISH & INSTALL STANDARD 8" PATCH

-1	LS	\$2,000.00	\$	(2,000.00)	
-2400	SY	\$9.50	\$	(22,800.00)	
-206	SY	\$23.00	\$	(4,738.00)	
-174	LF	\$1.00	\$	(174.00)	
-1	EA	\$200.00	\$	(200.00)	
-480	SY	\$70.00	\$	(33,600.00)	

**2016 OVERLAYS - STREET MAINTENANCE TAX PROGRAM**

**BOVAR ST - from University Ave. southward to Fincrest Dr.**

7. MILL EDGE AT CURB & GUTTER & BUTT JOINTS & REMOVE EXISTING PAVEMENT
- STARR CIRCLE - TRAVEL - from Starr Circle to Starr Circle
7. F&I PAVING FABRIC

7035	LF	\$3.00	\$	21,105.00	
1480	SY	\$5.00	\$	7,400.00	

**TRAVIS ST - PHASE 3 - from Starr Circle to South Westinghouse**

2. MILL EDGE AT CURB & GUTTER & BUTT JOINTS & REMOVE EXISTING PAVEMENT
7. F&I PAVING FABRIC

-2885	LF	\$3.00	\$	(8,655.00)	
4638	SY	\$5.00	\$	23,180.00	

**2016 RECONSTRUCTS - ASPHALT**

**MEMORIAL DR (HUGE DIP) - from Memorial Dr. to near Country Club Dr.**

1. F&I, MAINTAIN & REMOVE BARRICADES, SIGNS & TRAFFIC CONTROL
2. RMV & DISPOSE OF EX. VEGETATION, TOPSOIL, EXCAVATE TO PROP. SUBGRADE
3. RMV & DISPOSE OF EX. SURFACE & BASE & EXCAVATE TO PROP SUBGRADE
4. REMOVE & DISPOSE OF EXISTING CURB & GUTTER
5. FURNISH & INSTALL 8" TYPE "A" GRADE 2 FLEXIBLE BASE
6. FURNISH & INSTALL TYPE "D" LEVEL UP
7. F&I STD 2" THK (MIN.) HMAC TYPE "D" OVERLAY COURSE INCL ASPHALT TACK
8. FURNISH & INSTALL STANDARD CURB & GUTTER
9. MILL EDGE AT CURB & GUTTER & BUTT JOINTS & REMOVE EXISTING PAVEMENT
10. F&I STD 1 1/2" THK (MIN.) HMAC TYPE "D" DRIVEWAY TRANSITION

-1	LS	\$500.00	\$	(500.00)	
-66	CY	\$10.00	\$	(650.00)	
-105	CY	\$15.00	\$	(1,575.00)	
-25	LF	\$10.00	\$	(250.00)	
-70	CY	\$100.00	\$	(7,000.00)	
-123	TONS	\$125.00	\$	(15,375.00)	
-225	SY	\$15.00	\$	(3,375.00)	
-78	LF	\$25.00	\$	(1,950.00)	
-237	LF	\$3.00	\$	(711.00)	
-28	SY	\$23.00	\$	(644.00)	

**POPULAR ST - EAST LANE AVE. #3 & #4**

1. F&I, MAINTAIN & REMOVE BARRICADES, SIGNS & TRAFFIC CONTROL
2. PULVERIZE, BLADE, MIX & RESHAPE SUBGRADE
3. F&I STD 2" THK (MIN.) HMAC TYPE "D" OVERLAY COURSE INCL ASPHALT TACK
4. F&I STD 1 1/2" THK (MIN.) HMAC TYPE "D" OVERLAY COURSE INCL ASPHALT TACK
5. F&I STD 1 1/2" THK (MIN.) HMAC TYPE "D" DRIVEWAY TRANSITION
6. VALVE BOX ADJUSTMENT TO GRADE

1	LS	\$2,000.00	\$	2,000.00	
6387	SY	\$10.00	\$	63,870.00	
6387	SY	\$12.00	\$	76,644.00	
8842	SY	\$9.50	\$	\$2,099.00	
242	SY	\$23.00	\$	5,566.00	
1	EA	\$200.00	\$	200.00	

**2016 OVERLAYS - STREET MAINTENANCE TAX PROGRAM**

1. F&I, MAINTAIN & REMOVE BARRICADES, SIGNS & TRAFFIC CONTROL
2. PULVERIZE, BLADE, MIX & RESHAPE SUBGRADE
3. F&I STD 2" THK (MIN.) HMAC TYPE "D" OVERLAY COURSE INCL ASPHALT TACK
4. F&I STD 1 1/2" THK (MIN.) HMAC TYPE "D" DRIVEWAY TRANSITION
5. VALVE BOX ADJUSTMENT TO GRADE

1	LS	\$2,000.00	\$	2,000.00	
2000	SY	\$10.00	\$	20,000.00	
2000	SY	\$12.00	\$	24,000.00	
10	SY	\$23.00	\$	230.00	
1	EA	\$200.00	\$	200.00	

**2016 OVERLAYS - STREET MAINTENANCE TAX PROGRAM**

1. F&I, MAINTAIN & REMOVE BARRICADES, SIGNS & TRAFFIC CONTROL
2. PULVERIZE, BLADE, MIX & RESHAPE SUBGRADE
3. F&I STD 2" THK (MIN.) HMAC TYPE "D" OVERLAY COURSE INCL ASPHALT TACK

1	LS	\$500.00	\$	500.00	
807	SY	\$10.00	\$	8,070.00	
807	SY	\$12.00	\$	9,684.00	

- 1. F&I, MAINTAIN & REMOVE BARRICADES, SIGNS & TRAFFIC CONTROL
- 2. PULVERIZE, BLADE, MIX & RESHAPE SUBGRADE
- 3. F&I STD 2" THK (MIN.) HMAC TYPE "D" OVERLAY COURSE INCL ASPHALT TACK
- 4. F&I STD 1 1/2" THK (MIN.) HMAC TYPE "D" DRIVEWAY TRANSITION

1	LS	\$500.00	
2502	SY	\$10.00	500.00
2502	SY	\$12.00	25,020.00
16	SY	\$23.00	30,024.00
			368.00

Changes in contract price due to this change order:  
 Total (Decreases) Increases:

\$	(381,764.00)	\$	426,531.00
\$		\$	44,767.00

The sum of \$44,767.00 is hereby ADDED TO the total contract price, and the contract price to date thereby is:

\$ 1,539,531.10

The time for construction completion is increased by \_\_\_0\_\_\_ additional calendar days.

This document shall become an amendment to the contract and all provisions of the contract will apply hereto.

RECOMMENDED BY (Engineer):

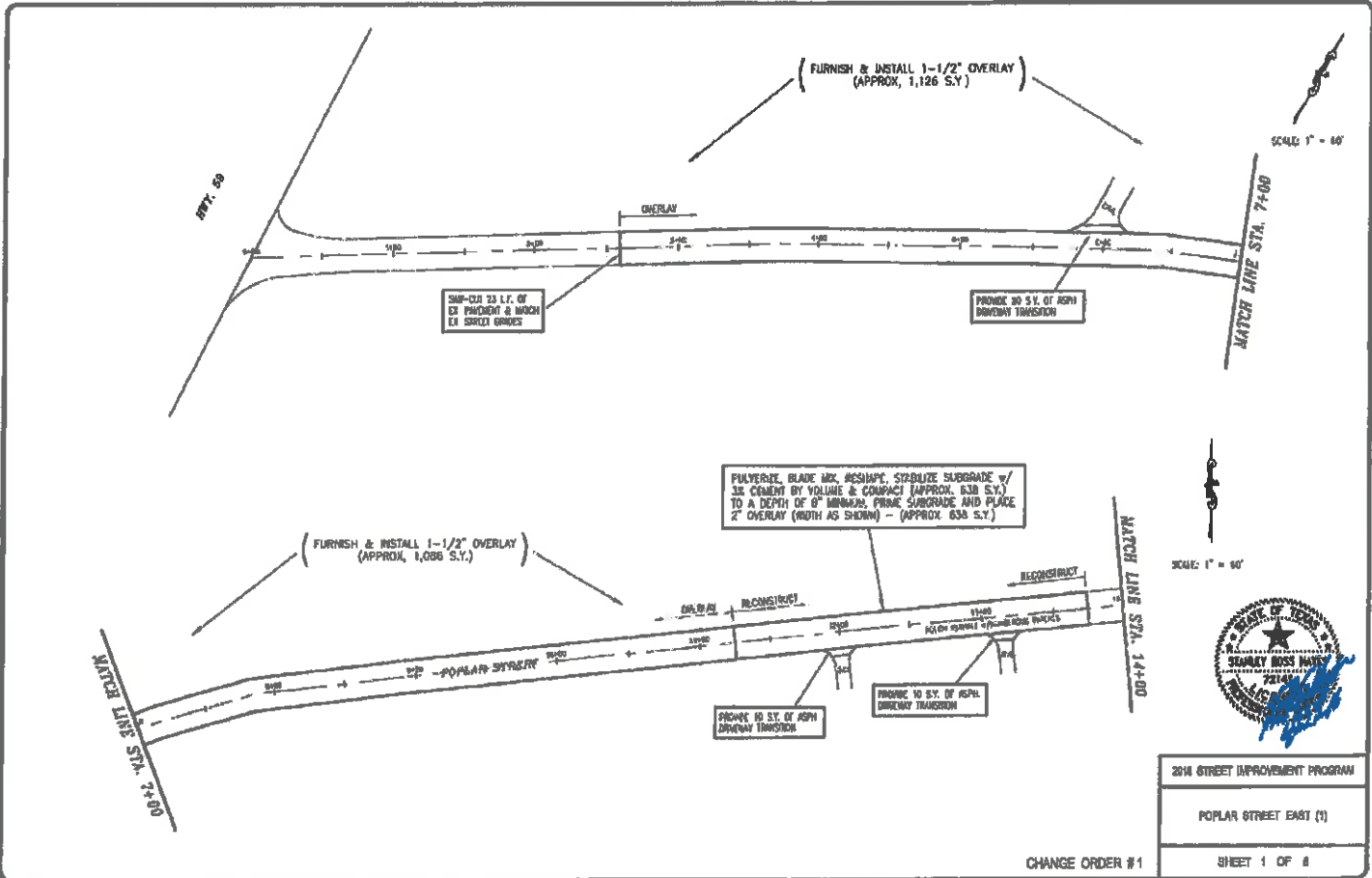
\_\_\_\_\_ Date

ACCEPTED BY (Contractor):

\_\_\_\_\_ Date

APPROVED BY (Owner):

\_\_\_\_\_ Date



2014 STREET IMPROVEMENT PROGRAM

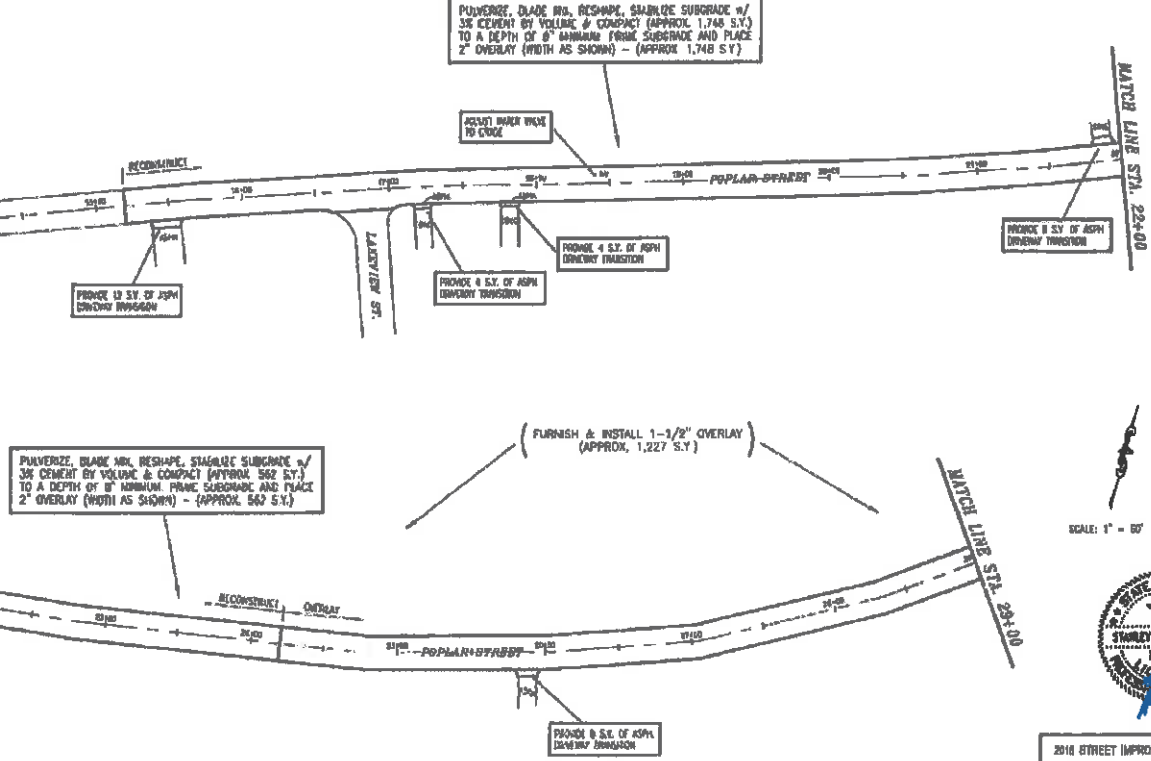
POPLAR STREET EAST (1)

CHANGE ORDER #1

SHEET 1 OF 4

MATCH LINE STA. 144+00

MATCH LINE STA. 22+00



PULVERIZE, BLADE MR, RESHAPE, STABILIZE SUBGRADE w/  
3% CEMENT BY VOLUME & COMPACT (APPROX. 1,748 S.Y.)  
TO A DEPTH OF 6" MINIMUM FROM SUBGRADE AND PLACE  
2" OVERLAY (WIDTH AS SHOWN) - (APPROX. 1,748 S.Y.)

RECONSTRUCT

PROVIDE 1.5" S.Y. OF ASPH  
DRAINAGE TRAP

PROVIDE 4 S.Y. OF ASPH  
DRAINAGE TRAP

PROVIDE 4 S.Y. OF ASPH  
DRAINAGE TRAP

PROVIDE 8 S.Y. OF ASPH  
DRAINAGE TRAP

PULVERIZE, BLADE MR, RESHAPE, STABILIZE SUBGRADE w/  
3% CEMENT BY VOLUME & COMPACT (APPROX. 562 S.Y.)  
TO A DEPTH OF 6" MINIMUM FROM SUBGRADE AND PLACE  
2" OVERLAY (WIDTH AS SHOWN) - (APPROX. 562 S.Y.)

FURNISH & INSTALL 1-1/2" OVERLAY  
(APPROX. 1,227 S.Y.)

RECONSTRUCT

OUTRIG

PROVIDE 8 S.Y. OF ASPH  
DRAINAGE TRAP

SCALE: 1" = 60'

SCALE: 1" = 60'



2018 STREET IMPROVEMENT PROGRAM

POPLAR STREET EAST (2)

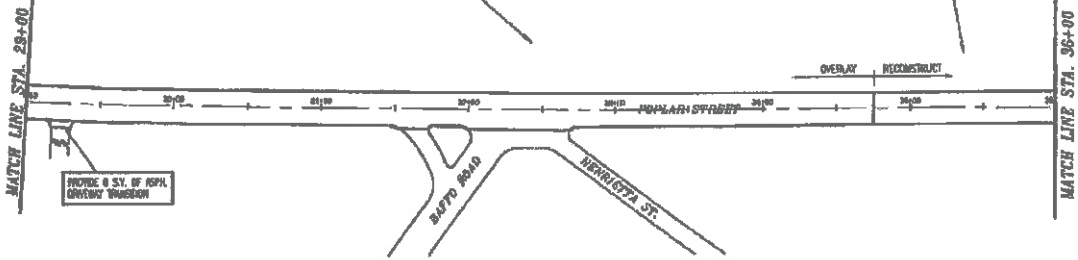
SHEET 2 OF 6

CHANGE ORDER #1

PULVERIZE, BLADE HD. RESURF. STABILIZE SUBGRADE w/ 3% CEMENT BY VOLUME & COMPACT (APPROX. 305 S.Y.) TO A DEPTH OF 8" MINIMUM PRIME SUBGRADE AND PLACE 2" OVERLAY (WIDTH AS SHOWN) - (APPROX. 306 S.Y.)



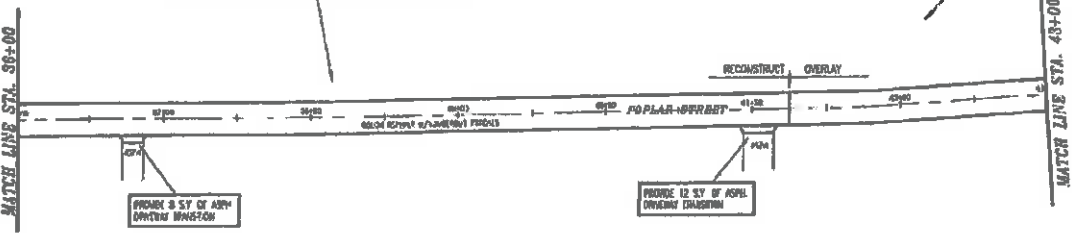
(FURNISH & INSTALL 1-1/2" OVERLAY)  
(APPROX. 1,480 S.Y.)



PROVIDE 8 S.Y. OF ASPH DRIVEWAY THICKNESS

PULVERIZE, BLADE HD. RESURF. STABILIZE SUBGRADE w/ 3% CEMENT BY VOLUME & COMPACT (APPROX. 1,283 S.Y.) TO A DEPTH OF 8" MINIMUM PRIME SUBGRADE AND PLACE 2" OVERLAY (WIDTH AS SHOWN) - (APPROX. 1,283 S.Y.)

(FURNISH & INSTALL 1-1/2" OVERLAY)  
(APPROX. 425 S.Y.)



PROVIDE 8 S.Y. OF ASPH DRIVEWAY THICKNESS

PROVIDE 12 S.Y. OF ASPH DRIVEWAY THICKNESS



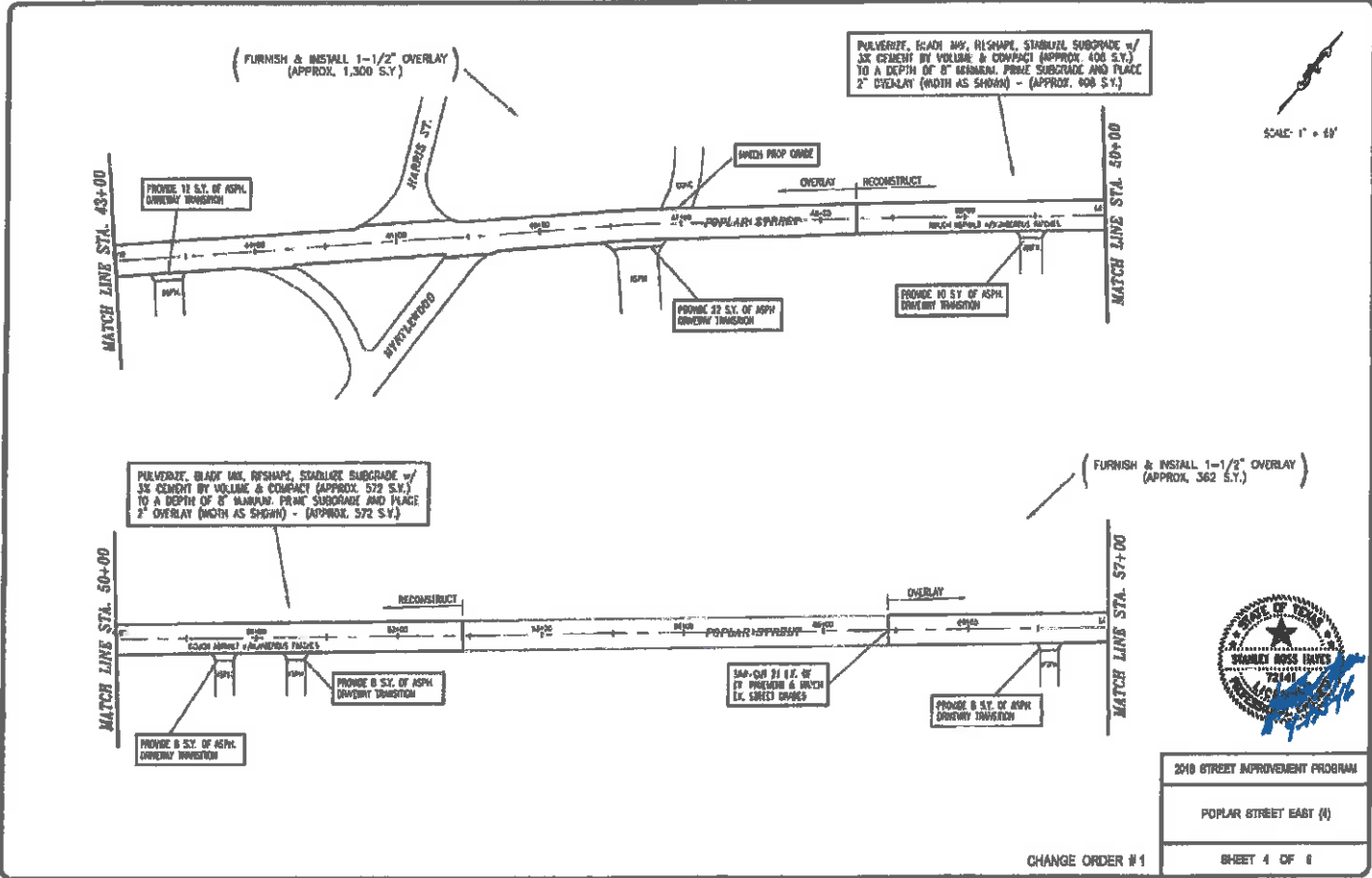
ZONING STREET IMPROVEMENT PROGRAM

POPLAR STREET EAST (3)

CHANGE ORDER #1

SHEET 3 OF 8





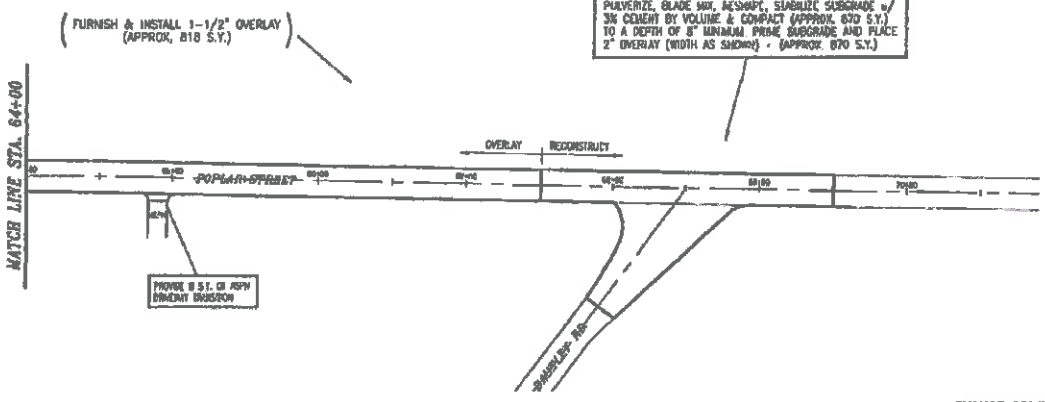
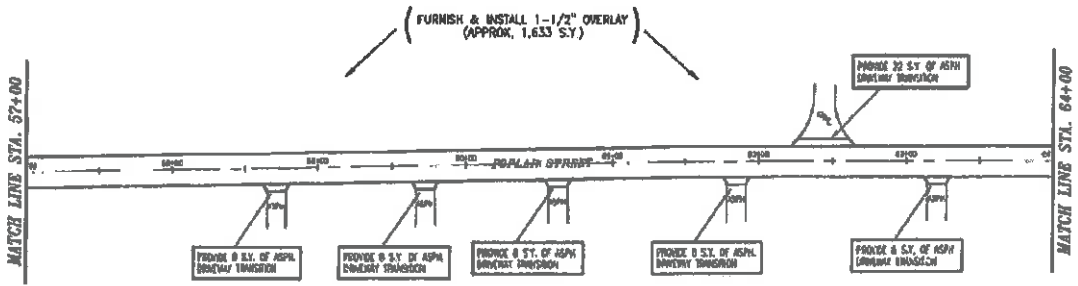
SCALE: 1" = 60'



2010 STREET IMPROVEMENT PROGRAM  
 POPLAR STREET EAST (N)  
 CHANGE ORDER #1  
 SHEET 4 OF 8



SCALE: 1" = 60'



2011 STREET IMPROVEMENT PROGRAM
POPLAR STREET EAST (S)
SHEET 5 OF 8

CHANGE ORDER #1

PULVERIZE, GRADE MIX, RESHAPE, STABILIZE SUBGRADE w/  
3% CEMENT BY VOLUME & COMPACT (APPROX. 1,390 S.Y.)  
TO A DEPTH OF 8" MINIMUM FROM SUBGRADE AND PLACE  
2" OVERLAY (WIDTH AS SHOWN) - (APPROX. 1,300 S.Y.)

SCALE: 1" = 30'

LOOP 300

FERN LAKE CUTOFF

MATCH LINE STA. 6+00

PULVERIZE, GRADE MIX, RESHAPE, STABILIZE SUBGRADE w/  
3% CEMENT BY VOLUME & COMPACT (APPROX. 1,112 S.Y.)  
TO A DEPTH OF 8" MINIMUM FROM SUBGRADE AND PLACE  
2" OVERLAY (WIDTH AS SHOWN) - (APPROX. 1,112 S.Y.)

MATCH LINE STA. 6+00

FERN LAKE CUTOFF

PROVIDE 8 SY OF ASPH.  
DRAINAGE CURBSIDE

PROVIDE 8 SY OF ASPH.  
DRAINAGE CURBSIDE

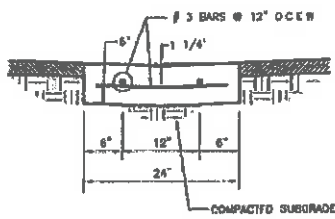


2016 STREET IMPROVEMENT PROGRAM

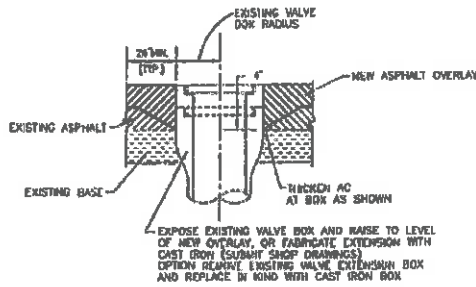
FERN LAKE CUTOFF

SHEET 6 OF 6

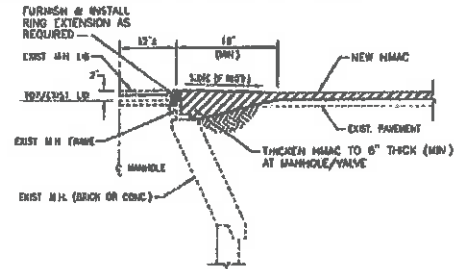
CHANGE ORDER #1



**CONCRETE LAY DOWN CURB & GUTTER DETAIL**  
N.T.S.

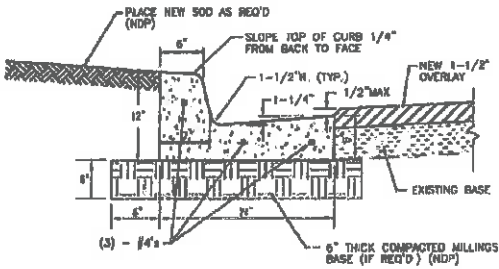


**DETAIL OF VALVE BOX ADJUSTMENTS**  
N.T.S.

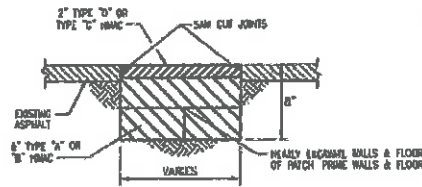


**MANHOLE ADJUSTMENT DETAIL**  
N.T.S.

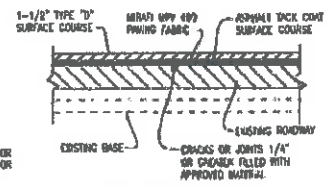
NOTE: ADJUST VALVE BOXES TO NEW OVERLAY HEIGHT AND THICKEN HMA/C SIMILAR TO MANHOLE ADJUSTMENT.



**STANDARD 24\"/>**



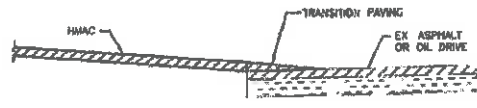
**TYPICAL STANDARD 6\"/>**



**TYPICAL ASPHALT OVERLAY w/PAVING FABRIC**  
N.T.S.



**TYPICAL CONCRETE DRIVEWAY TIE-IN**  
N.T.S.



**TYPICAL ASPHALT/GRAVEL DRIVEWAY TIE-IN**  
N.T.S.



2010 STREET IMPROVEMENT PROGRAM

MISCELLANEOUS DETAILS 2

SHEET 42 OF 43